

SMALL SPACES

AT DURST

Offices <10K SF



FIND YOUR PERFECTLY SIZED SMALL SPACE

Small spaces at Durst are a big deal. Endless combinations of size, layout, location, and level of finish enable any tenant to find and create their perfectly tailored office experience.

The benefits of selecting a Durst building extend far beyond the walls of your new office. Unparalleled service and an enduring commitment to our tenants - no matter the size - ensure direct, lasting relationships that often span decades. So when your company is ready to grow, Durst is ready to assist in finding the ideal medium, large, or not-as-small space within our portfolio.



FIND YOUR PERFECT FIT

With spaces ranging from 995 SF to 10,532 SF, the definition of a “small space” is up to you...

1-4K SF

ONE WORLD TRADE CENTER
PARTIAL FLOOR 84 - SUITE C
2,747 SF

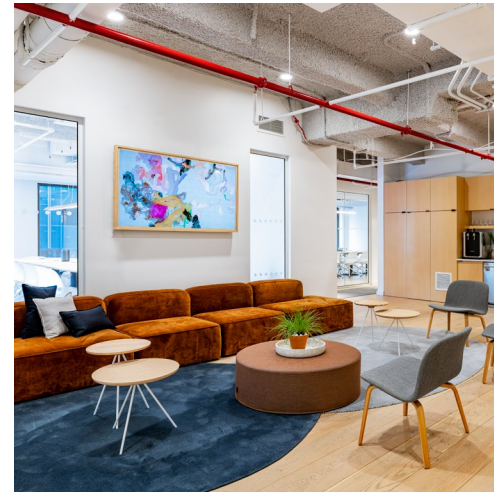


4-7K SF

655 THIRD AVENUE
ENTIRE FLOOR 24
5,719 SF

8-10K SF

675 THIRD AVENUE
PARTIAL FLOOR 2
8,189 SF



HOW DO YOU WORK?

Whether you prefer open workstations, multiple offices, or a combination in between, we have an office to suit your firm's needs.

OPEN WORK

675 THIRD AVENUE
ENTIRE FLOOR 14
10,235 SF

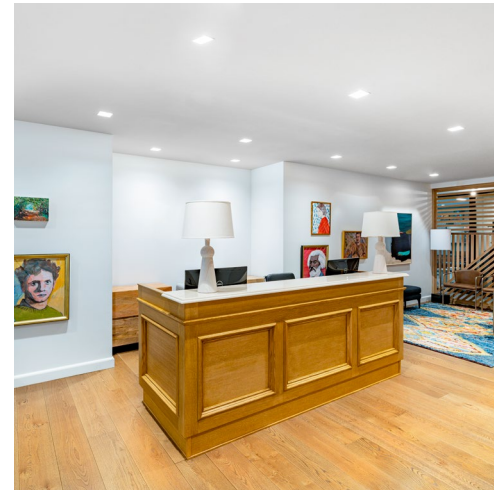


BLENDED

ONE WORLD TRADE CENTER
PARTIAL FLOOR 71 - SUITE J
9,499 SF

OFFICE INTENSIVE

655 THIRD AVENUE
ENTIRE FLOOR 27
5,719 SF



BESPOKE OR MOVE-IN READY?

From custom build-outs to prebuilts and fully furnished move-in ready units, we offer levels of personalization tailored to every timeline, budget, and style.

FULLY
CUSTOMIZABLE

675 THIRD AVENUE
ENTIRE FLOOR 20
10,532 SF

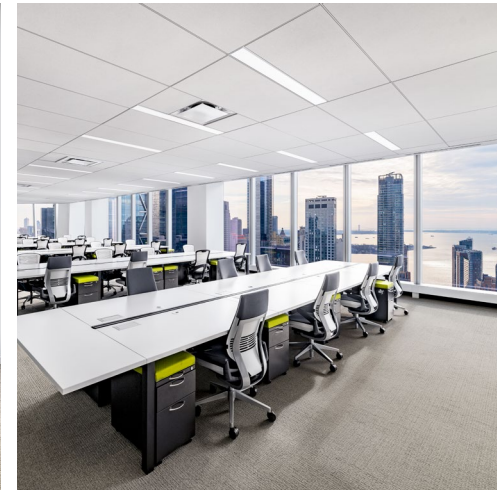


PREBUILT

733 THIRD AVENUE
ENTIRE FLOOR 19
7,442 SF

FURNISHED &
WIRED

ONE WORLD TRADE CENTER
PARTIAL FLOOR 45 - SUITE D
8,590 SF



LOCATION, LOCATION, LOCATION

With premier office towers steps from Grand Central, moments from Bryant Park, and at the nexus of Lower Manhattan, you'll be sure to find your perfect space at the center of it all.

MIDTOWN EAST

675 THIRD AVENUE
PARTIAL FLOOR 22
2,267 SF



MIDTOWN WEST

114 WEST 47TH STREET
PARTIAL FLOOR 23
4,458 SF

DOWNTOWN

ONE WORLD TRADE CENTER
PARTIAL FLOOR 46 - SUITE A
3,446 SF



AVAILABILITIES

*Click listing for more information

	BUILDING	AREA	LAYOUT			BUILD			LOCATION		
			OPEN WORK	BLENDED	OFFICE INTENSIVE	FULLY CUSTOMIZABLE	PREBUILT	FURNISHED & WIRED	MIDTOWN EAST	MIDTOWN WEST	DOWNTOWN
1-4K	675 Third Avenue - Partial Floor 18	995 SF			•		•		•		
	675 Third Avenue - Partial Floor 24	1,193 SF			•		•		•		
	675 Third Avenue - Partial Floor 22	2,267 SF		•			•		•		
	1133 Avenue of Americas - Partial Floor 27	2,615 SF			•		•			•	
	655 Third Avenue - Partial Floor 25	2,716 SF	•				•		•		
	One World Trade - Partial Floor 84 C	2,747 SF		•			•				•
	675 Third Avenue - Partial Floor 19	3,031 SF			•		•		•		
	675 Third Avenue - Partial Floor 22	3,487 SF			•		•		•		
	One World Trade - Partial Floor 45 C	3,510 SF		•			•				•
	675 Third Avenue - Partial Floor 24	3,651 SF			•		•		•		
4-7K	733 Third Avenue - Partial Floor 17	3,711 SF		•			•		•		
	One World Trade - Partial Floor 47 A	4,156 SF		•			•				•
	1133 Avenue of Americas - Partial Floor 27	4,188 SF			•		•			•	
	114 West 47 th Street - Partial Floor 23	4,458 SF		•			•			•	
	675 Third Avenue - Partial Floor 15	4,834 SF		•			•		•		
	One World Trade - Partial Floor 46 D	4,963 SF	•				•				•
	675 Third Avenue - Partial Floor 29	5,020 SF		•			•		•		
	1133 Avenue of Americas - Partial Floor 27	5,263 SF		•			•			•	
	675 Third Avenue - Entire Floor 26*	5,212 - 8,496 SF			•		•		•		
	1155 Avenue of Americas - Partial Floor 3	5,387 SF			•		•			•	
	655 Third Avenue - Entire Floor 24	5,719 SF		•			•		•		
	655 Third Avenue - Entire Floor 27	5,719 SF			•		•		•		
	1133 Avenue of Americas - Partial Floor 36	5,976 SF		•			•			•	
	733 Third Avenue - Partial Floor 10	7,227 SF		•			•		•		
	675 Third Avenue - Partial Floor 10	7,324 SF	•				•		•		
	205 East 42 nd Street - Penthouse	7,377 SF		•			•		•		
	733 Third Avenue - Entire Floor 19	7,442 SF			•		•		•		
8-10K	1155 Avenue of Americas - Partial Floor 33 S	8,049 SF		•			•			•	
	675 Third Avenue - Entire Floor 2	8,189 SF			•		•		•		
	655 Third Avenue - Partial Floor 15	8,531 SF			•		•		•		
	675 Third Avenue - Entire Floor 23	8,580 SF			•		•		•		
	One World Trade - Partial Floor 45 D	8,590 SF	•				•				•
	One World Trade - Partial Floor 46 L	8,995 SF	•				•				•
	1155 Avenue of Americas - Partial Floor 33 N	9,197 SF		•			•			•	
	One World Trade - Partial Floor 49 D	9,425 SF	•				•				•
	One World Trade - Partial Floor 71 J	9,499 SF		•			•				•
	675 Third Avenue - Entire Floor 14	10,235 SF	•				•		•		
675 Third Avenue - Entire Floor 20	10,532 SF	•	•	•	•			•			



DURST COMMERCIAL PROPERTIES

1. ONE FIVE ONE (151 WEST 42ND STREET)
2. ONE BRYANT PARK
3. 1133 AVENUE OF THE AMERICAS
4. 1155 AVENUE OF THE AMERICAS
5. 114 WEST 47TH STREET
6. 825 THIRD AVENUE
7. 733 THIRD AVENUE
8. 675 THIRD AVENUE
9. 655 THIRD AVENUE
10. 205 EAST 42ND STREET
11. ONE WORLD TRADE CENTER

CONTACT US

THOMAS BOW

212.257.6610
TBow@durst.org

ASHLEA AARON

212.257.6590
AAaron@durst.org

TANYA GRIMALDO

212.257.6515
TGrimaldo@durst.org

GARY KERPER

212.789.1761
GKerper@durst.org

ROCCO ROMEO

212.257.6630
RRomeo@durst.org

LAUREN FERRENTINO

212.257.6596
LFerrentino@durst.org

LINDSEY RAVESLOOT CULLEN

212.257.6518
LRavesloot@durst.org

ERIC ENGELHARDT

212.667.8704
EEngelhardt@durst.org

KAREN KUZNICK

212.667.8705
KKuznick@durst.org

BAILEY CALIBAN

212.257.6535
BCaliban@durst.org

