

114
W47

SPRING 2017





LEASING INFORMATION

TOM BOW
Senior Vice President of Leasing
212.257.6610
tbow@durst.org

ROCCO ROMEO
Vice President of Leasing
212.257.6630
rromeo@durst.org

ASHLEA AARON
Vice President of Leasing
212.257.6590
aaaron@durst.org

ASHLEY GEE
Leasing Manager
212.257.6596
agee@durst.org

LINDSEY RAVESLOOT
Leasing Associate
212.257.6518
lravesloot@durst.org

TANYA GRIMALDO
Leasing Associate
212.257.6515
tgrimaldo@durst.org



114
W47

IDEAL RESTAURANT SPACE

Strategically located at 47th Street between Broadway and Avenue of the Americas, this high-visibility, high-traffic space is close to Times Square and Rockefeller Center – and ideally positioned to attract thousands of daily tourists from those areas. It is also right in the center of Corporate Row, providing an even greater daily flow of potential customers, with thousands of local office workers who are looking for a great new eatery.

AREA PROFILE

97K 97,000 people pass by DAILY

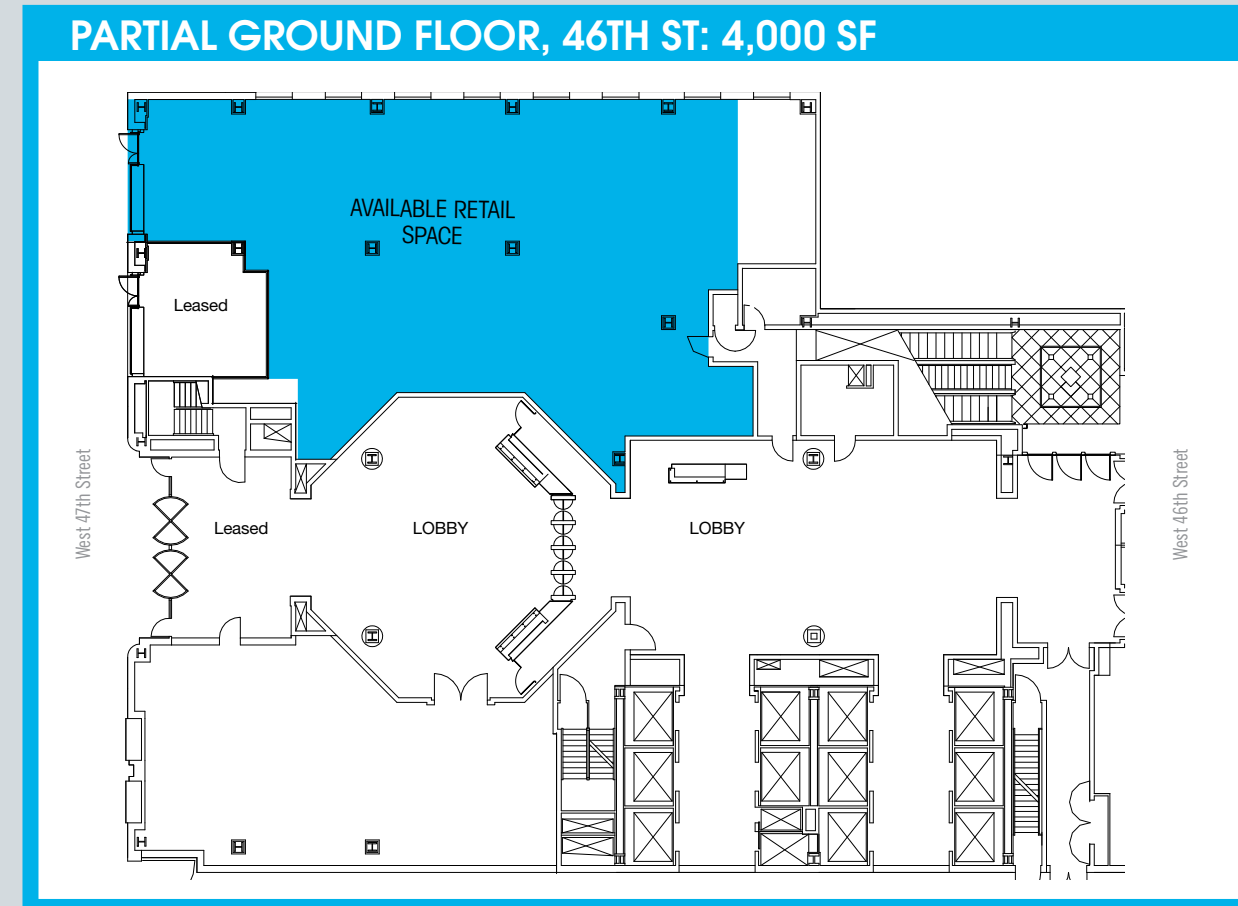


The map illustrates the layout of Times Square, New York City, with a focus on the intersection of Avenue of the Americas, Seventh Avenue, and Eighth Avenue. The map is oriented with Avenue of the Americas running vertically and Eighth Avenue running horizontally. Broadway, a major diagonal thoroughfare, cuts through the center of the map. A yellow line with the letters 'NQRW' is drawn across the map, likely representing a specific transit route or a designated area. The map includes numerous labels for buildings, businesses, and landmarks, such as the Times Square Hotel, the New York Times Building, and the Times Square Station. The map also shows the locations of various transit lines, including the MTA and the New York City Subway. The map is color-coded with blue for water and green for parks. The text 'Times Square' is written in a large, stylized font at the top center.

114
W47

THE PROPERTY

4,000 SF



SLAB HEIGHT

20' 9"

FRONTAGE

22' 6" wrap-around

LEASING AGENTS

TOM BOW
212.257.6610
tbow@durst.org

ASHLEY GEE
212.257.6596
agee@durst.org

ROCCO ROMEO
212.257.6630
rromeo@durst.org

