



# Historic **FRONT STREET**

Turnkey  
wine bar  
space

**220**  
FRONT  
STREET

Between Peck Slip and Beekman Street



EXCLUSIVE LEASING AGENTS

**JP SUTRO**

Executive Managing Director  
212.776.1274  
[jsutro@lee-associates.com](mailto:jsutro@lee-associates.com)

**BRAD SCHWARZ**

Principal  
212.776.1290  
[bschwarz@lee-associates.com](mailto:bschwarz@lee-associates.com)

**PETER BRAUS**

Managing Principal  
212.776.1203  
[pbraus@lee-associates.com](mailto:pbraus@lee-associates.com)



# LOWER MANHATTAN

## SOUTH STREET SEAPORT

Historic

## FRONT STREET



# DOWNTOWN MARKET STATS

## SOUTH STREET SEAPORT

Only minutes from Wall Street, TriBeCa, Battery Park, City Hall and the NYSE.

### TOURISTS



Annually  
**15 MILLION**

### SPENDING



Annually  
**\$33 BILLION**



NYC ATTRACTIONS  
**RANKED TOP**  
**5**



TRAVEL+LEISURE RANK  
**26**  
**AMONG MOST VISITED  
SITES IN THE WORLD**



### LOWER MANHATTAN

**Residential Units:**  
30,000 currently exist  
+5,900 additional units  
under construction

**Residents:**  
87,000

**Average Household Income:**  
\$206,000

**Hotel Rooms:**  
11,589

### WORKFORCE

**Employed:**  
310,000

**Firms:**  
8,500

**Annual Transit  
Riders**  
127 Million

**Office Space**  
84 MSF

EXCLUSIVE LEASING AGENTS

**JP SUTRO**

Executive Managing Director  
212.776.1274  
jsutro@lee-associates.com

**BRAD SCHWARZ**

Principal  
212.776.1290  
bschwarz@lee-associates.com

**PETER BRAUS**

Managing Principal  
212.776.1203  
pbraus@lee-associates.com



# 220 FRONT STREET

## SPECIFICATIONS

### SPACE

800 SF

### FRONTAGE

25'

### CEILING

16'

### RENT

Upon Request

### POSSESSION

Immediate

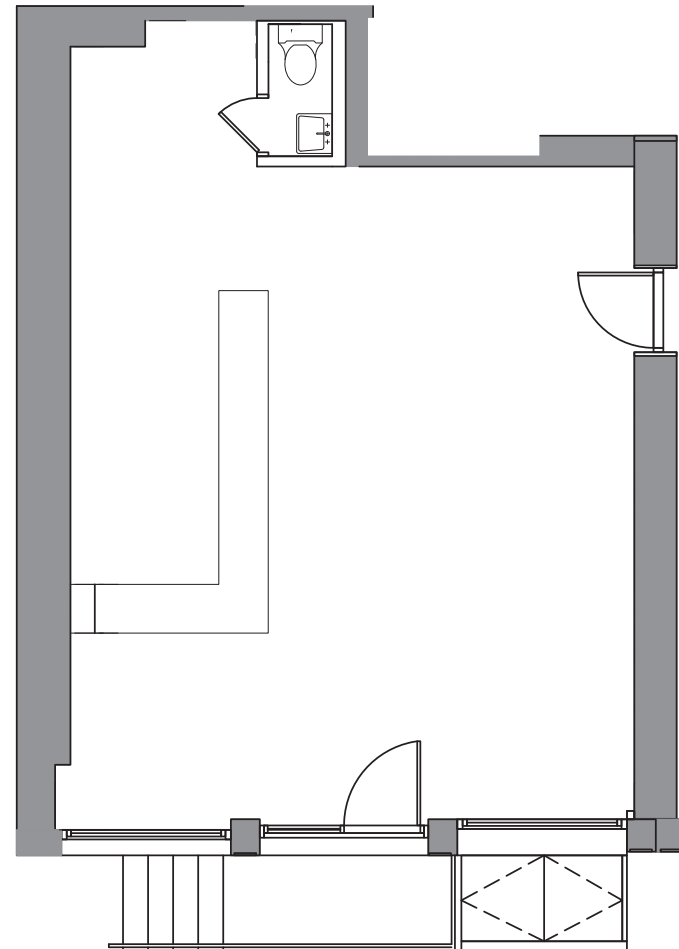
\* All measurements  
are approximate

### COMMENTS

- Turnkey wine bar installation (formerly Bin 220)
- Private front patio
- All-glass façade
- 4 steps above grade

### NEIGHBORS

- Pier 17 – 6 restaurants, rooftop concert venue, ESPN production studio
- Jean-George Fish Market
- Mr. C Seaport (Cipriani Luxury Hotel)
- Scotch & Soda
- IPIC Theater
- Van Leeuwen



FRONT STREET

# Historic FRONT STREET

EXCLUSIVE LEASING AGENTS

**JP SUTRO**

Executive Managing Director  
212.776.1274  
jsutro@lee-associates.com

**BRAD SCHWARZ**

Principal  
212.776.1290  
bschwarz@lee-associates.com

**PETER BRAUS**

Managing Principal  
212.776.1203  
pbraus@lee-associates.com