



1133  
A.O.A.

2018



# LEASING INFORMATION

TOM BOW  
Executive Vice President of  
Commercial Leasing  
212.257.6610  
tbow@durst.org

ROCCO ROMEO  
Senior Managing Director  
212.257.6630  
rromeo@durst.org

ASHLEY MAYS  
Managing Director  
212.257.6596  
amays@durst.org

ASHLEA AARON  
Senior Managing Director  
212.257.6590  
aaaron@durst.org





# MIDTOWN JEWEL BOX

This showcase retail location features a beautiful glass façade with floor-to-ceiling windows on three sides. An abundance of brilliant natural lighting throughout makes this space sparkle like a gemstone.

Located just one block from Bryant Park, between 43rd and 44th Streets, 1133 Avenue of the Americas offers high traffic and prominent exposure. This high-profile property is adjacent to the world headquarters, showroom and performance space of Steinway Hall, and home to a number of tech, finance, and law firms.

# THE NEIGHBORHOOD

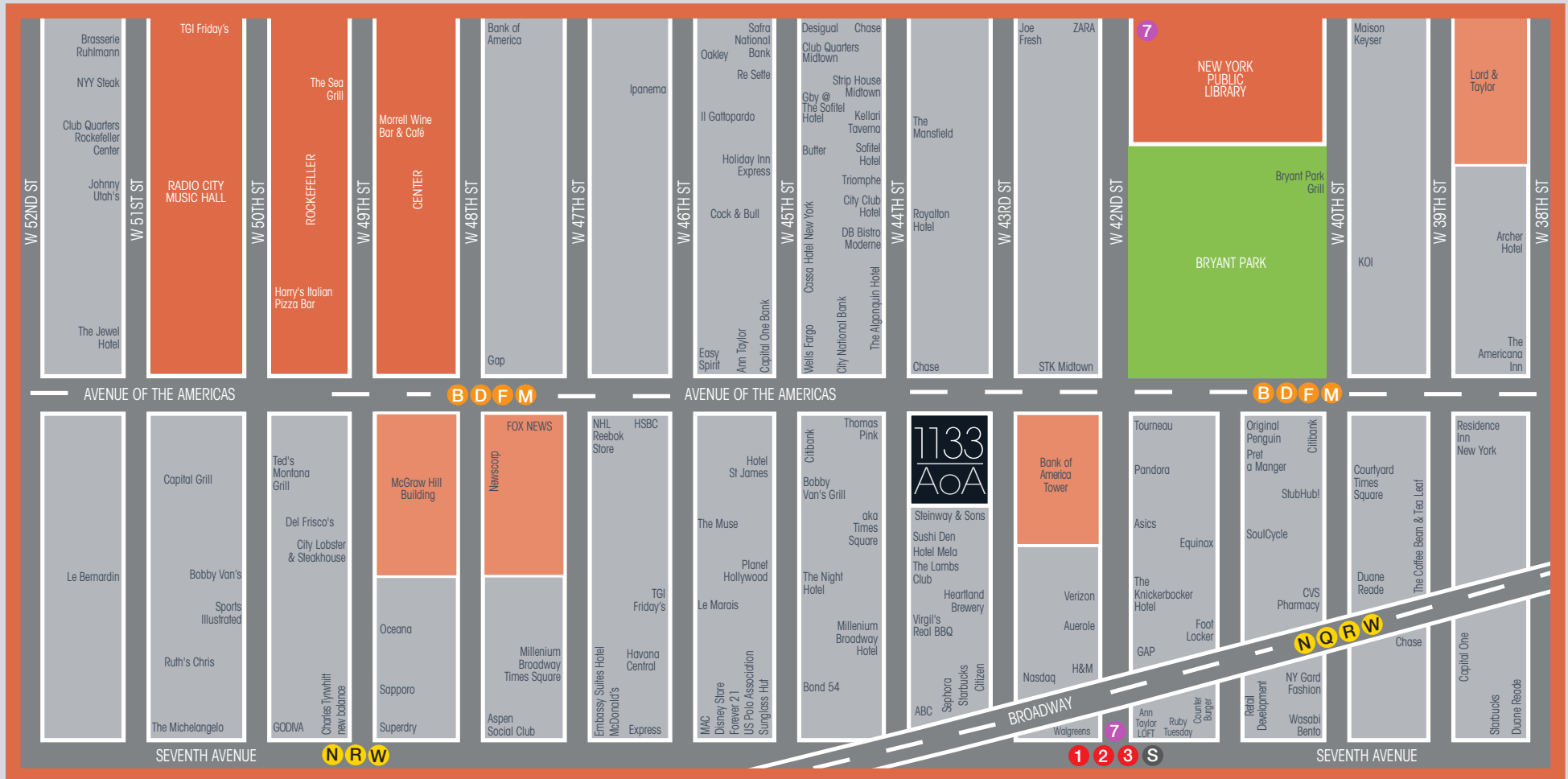
## AREA PROFILE

**6M** One block from Bryant Park, with over 6 million **VISITORS** per year

**46.6K** Strong foot **TRAFFIC**: 46,695 people per day during business hours



# HIGH TRAFFIC | VISIBILITY

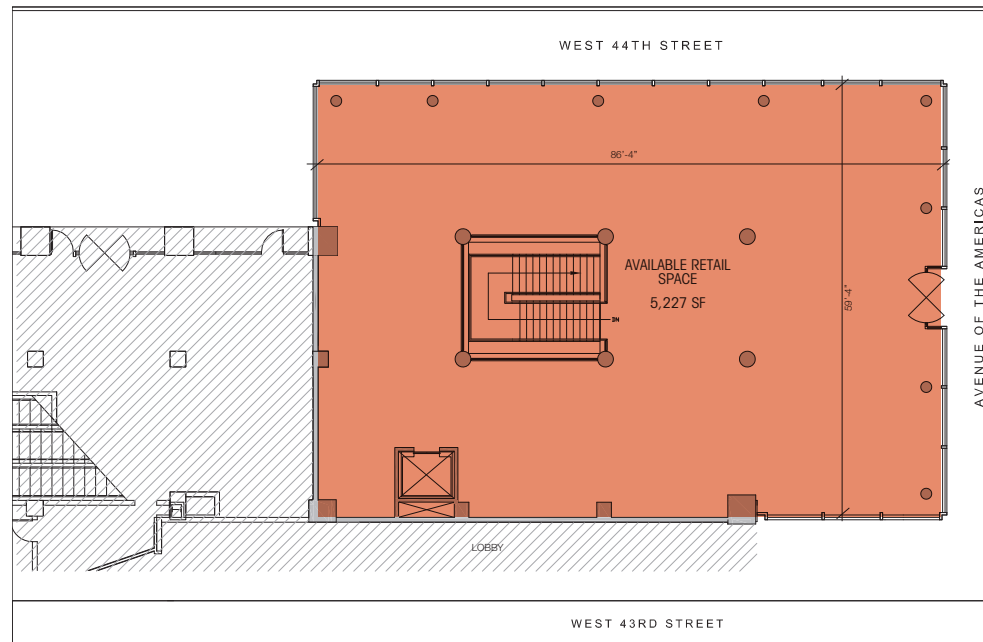
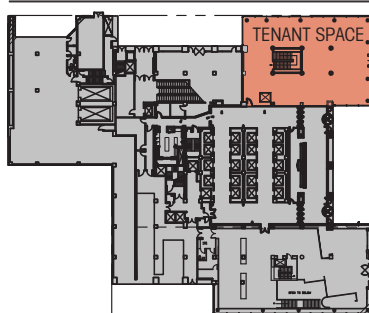


1133  
AoA

# THE PROPERTY

**GROUND FLOOR: 5,227 SF**

Key Plan - N.T.S.



## SLAB HEIGHT

C1 to Ground Floor: 15'6"  
Ground to 2nd Floor: 22'4"

## FRONTAGE

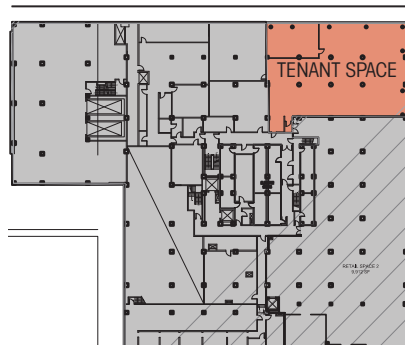
196' wrap-around



# 10,381 SF ON 2 LEVELS

**CONCOURSE: 5,294 SF**

Key Plan - N.T.S.



## LEASING AGENTS

TOM BOW  
212.257.6610  
tbow@durst.org

ROCCO ROMEO  
212.257.6630  
rromeo@durst.org

ASHLEY MAYS  
212.257.6596  
amays@durst.org

