

# 1155

AVENUE OF THE AMERICAS

YOUR PLACE  
FOR BLUE SKY THINKING

ROOFTOP PAVILION  
8,000-SF PAVILION  
4,000-SF TERRACE



THE APEX



INTERIOR PAVILION VIEW

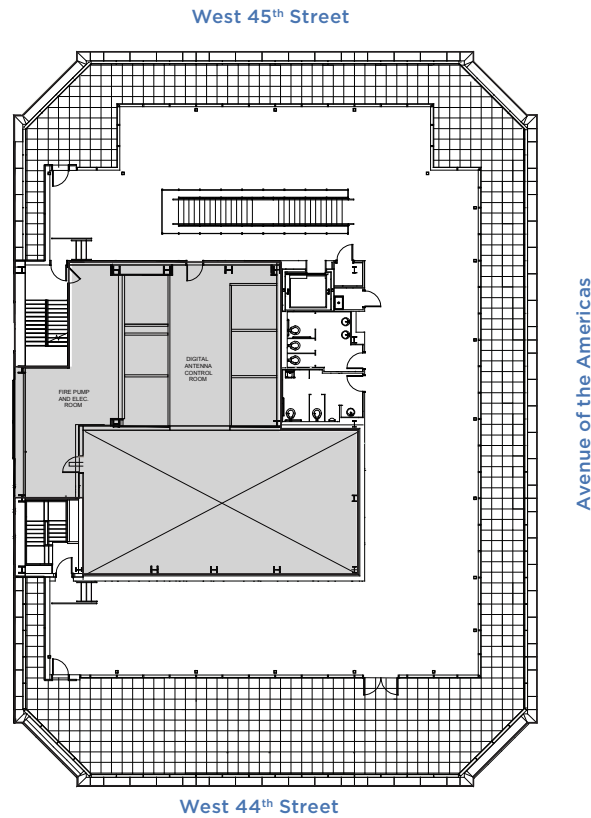
## AVAILABILITY

- NYC's Highest Skyline Boutique Office
- Dynamic Glass
- Panoramic Views
- Top-of-House Exclusivity

## PROPERTY FEATURES

- New Landscaped Plaza, Building Entrance, and Lobby
- Elevator Modernization Including Destination Dispatch Controls
- New Energy Efficient Curtain Wall with Floor-to-Ceiling Clear Glazing at Chamfered Corners
- New Low-Iron Energy-Efficient Casement Windows
- The First Building in NYC Certified LEED Silver Under LEED v4 Existing Buildings: Operations + Maintenance

## CORE & SHELL PLAN



### PRIMARY LEASING CONTACT

Rocco Romeo  
212.257.6630  
RRomeo@durst.org

### ADDITIONAL LEASING CONTACTS

Thomas Bow  
212.257.6610  
TBow@durst.org

Lauren Ferrentino  
212.257.6596  
LFerrentino@durst.org

Tanya Grimaldo  
212.257.6515  
TGrimaldo@durst.org

1155Aoa.com

# 1155

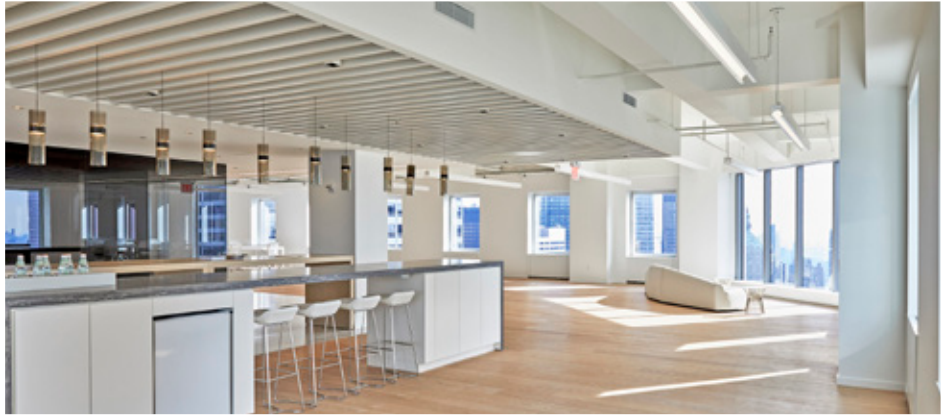
AVENUE OF THE AMERICAS

YOUR PLACE  
FOR BLUE SKY THINKING

ENTIRE FLOORS 35-41  
17,246 SF EACH



SOUTHEAST CHAMFER



39<sup>TH</sup> FLOOR RECEPTION

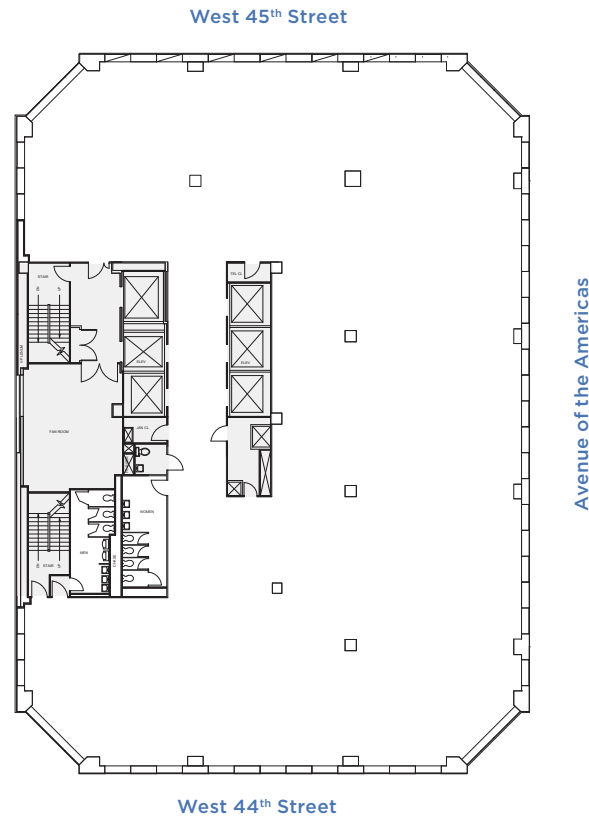
#### AVAILABILITY

- NYC's Highest Skyline Boutique Office with Accompanying Rooftop Pavilion and Terrace Opportunity
- Contiguous Block of up to 129k SF Available
- Panoramic Views
- Top-of-House Exclusivity

#### PROPERTY FEATURES

- New Landscaped Plaza, Building Entrance, and Lobby
- Elevator Modernization Including Destination Dispatch Controls
- New Energy Efficient Curtain Wall with Floor-to-Ceiling Clear Glazing at Chamfered Corners
- New Low-Iron Energy-Efficient Casement Windows
- The First Building in NYC Certified LEED Silver Under LEED v4 Existing Buildings: Operations + Maintenance

#### CORE & SHELL PLAN



#### PRIMARY LEASING CONTACT

Rocco Romeo  
212.257.6630  
RRomeo@durst.org

#### ADDITIONAL LEASING CONTACTS

Thomas Bow  
212.257.6610  
TBow@durst.org

Lauren Ferrentino  
212.257.6596  
LFerrentino@durst.org

Tanya Grimaldo  
212.257.6515  
TGrimaldo@durst.org

1155AoS.com