

205 EAST 42ND STREET

ENTIRE FLOOR 13 | 22,264 SF



BUILDING EXTERIOR



13TH FLOOR TERRACE - ARTIST RENDERING

AVAILABILITY FEATURES

- Full-floor leasehold condo ideal for 501(c)(3) organizations.
- Pristine, built, and furnished with potential to create +/-3,400 SF of accessible outdoor space.
- 48,836 SF contiguous with 12th Floor.

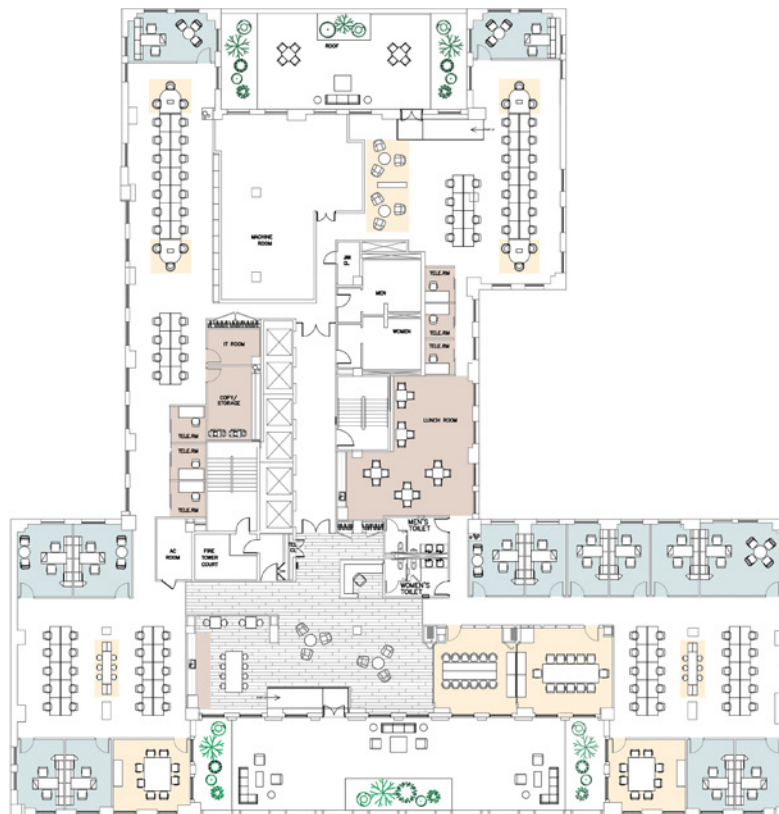
HEADCOUNT

PRIVATE OFFICE	14
BENCHING STATION	83
RECEPTION	1
TOTAL HEADCOUNT	98

GENERAL SPACES

CONF. ROOM / MEETING AREA	12
PANTRY	2
COPY/ STORAGE	1
TELEPHONE ROOMS	6
IT ROOMS	1

SAMPLE TEST FIT



East 42nd Street



PRIMARY LEASING CONTACT

Tanya Grimaldo
212.257.6515
TGrimaldo@durst.org

ADDITIONAL LEASING CONTACT

Thomas Bow
212.257.6610
TBow@durst.org