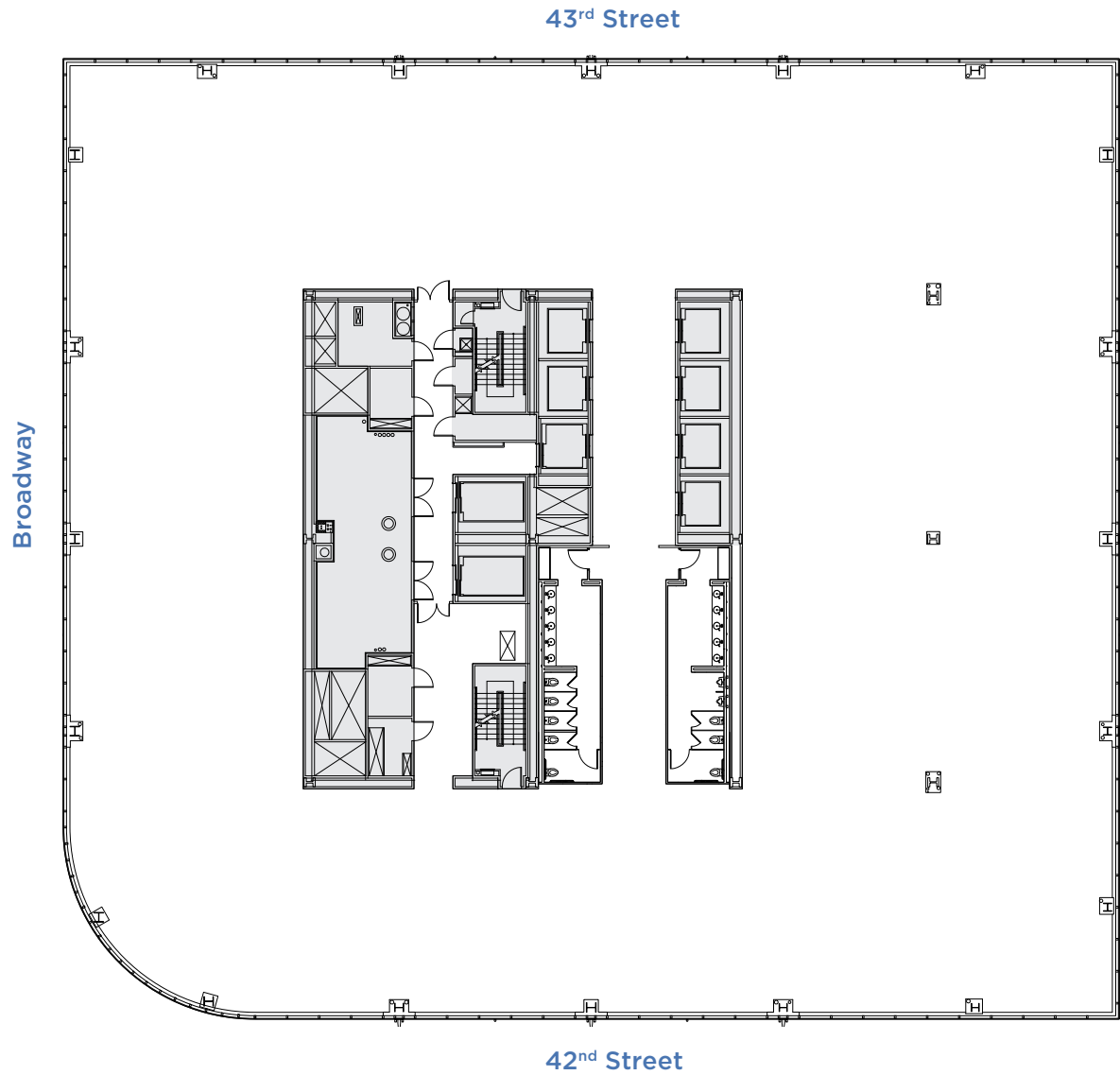


ONE FIVE ONE

151 WEST 42 ST

CORE & SHELL PLAN ENTIRE FLOORS 41-43



31,519 SF EACH



PRIMARY LEASING CONTACT

Rocco Romeo
212.257.6630
RRomeo@durst.org

ADDITIONAL LEASING CONTACTS

Thomas Bow	Tanya Grimaldo
212.257.6610	212.257.6515
TBow@durst.org	TGrimaldo@durst.org

ONE FIVE ONE

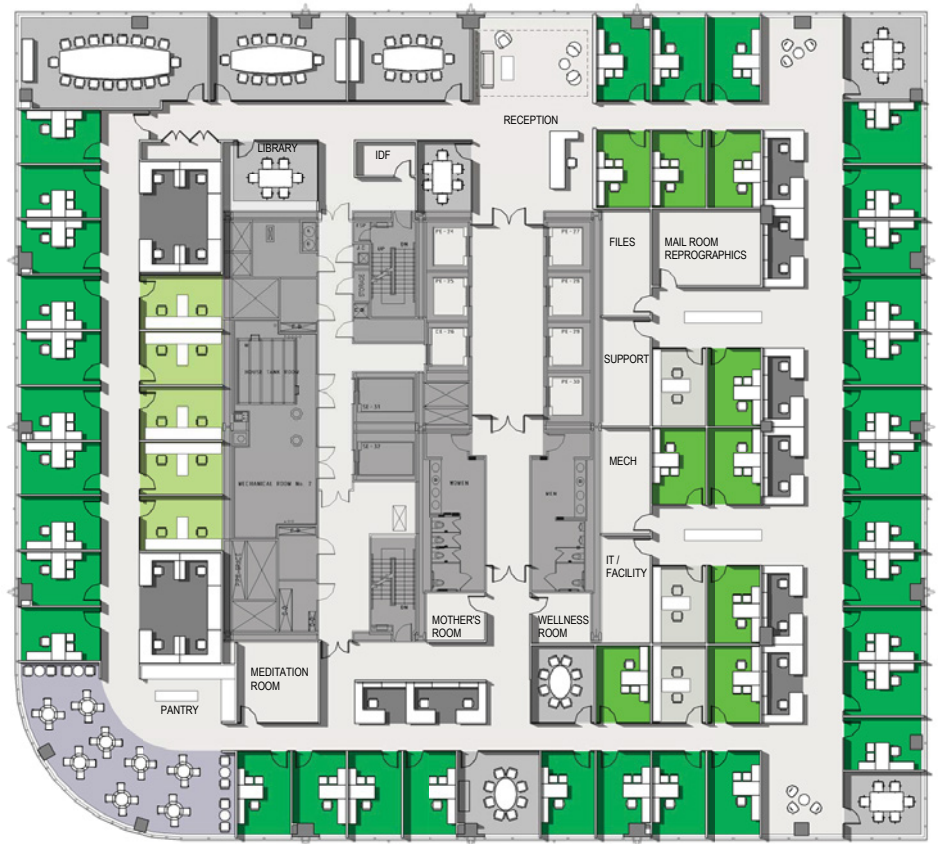
151 WEST 42 ST

LEGAL TEST FIT - OFFICE INTENSIVE ENTIRE FLOORS 41-43

- 33 Type B Offices at Window
- 9 Single Interior Offices
- 5 Double Interior Offices
- 23 Workstations
- 1 Receptionist
- Total: 71 People**
- 80 People at Conference Rooms
- 6 People at 3 Case Rooms
- 40 People at Pantry
- 12 People at Tel Rooms & Lounge Seating

Total Usable Area: 31,519 SF
Area Per Person (71 People): 443 SF
***Area Per Attorney (47 Attorneys):** 670 SF

*Based on an Approximation of 47 Total Attorneys in Offices only



31,519 SF EACH



PRIMARY LEASING CONTACT

Rocco Romeo
212.257.6630
RRomeo@durst.org

ADDITIONAL LEASING CONTACTS

Thomas Bow
212.257.6610
TBow@durst.org

Tanya Grimaldo
212.257.6515
TGrimaldo@durst.org

ONE FIVE ONE

151 WEST 42 ST

LEGAL TEST FIT - OPEN WORK ENTIRE FLOORS 41-43

- 7 Offices at Window
 - 18 Single Interior Offices
 - 79 Workstations
 - 1 Receptionist
- Total: 104 People**
- 100 People at Conference Rooms
 - 4 People at 2 Case Rooms
 - 34 People at Pantry
 - 11 People at Tel Rooms & Lounge Seating

Total Usable Area: 31,519 SF
Area Per Person (104 People): 303 SF
***Area Per Attorney 75 Attorneys:** 420 SF

*Based on an Approximation of 75 Total Attorneys in
Offices and Workstations



31,519 SF EACH



PRIMARY LEASING CONTACT

Rocco Romeo
212.257.6630
RRomeo@durst.org

ADDITIONAL LEASING CONTACTS

Thomas Bow
212.257.6610
TBow@durst.org

Tanya Grimaldo
212.257.6515
TGrimaldo@durst.org

ONE FIVE ONE

151 WEST 42 ST

LEGAL TEST FIT - NEIGHBORHOOD ENTIRE FLOORS 41-43

19 Interior Offices

37 Workstations Type A

32 Workstations Type B

1 Receptionist

Total: 89 People

98 People at Conference Rooms

8 People at 4 Case Rooms

34 People at Pantry

13 People at Tel Rooms & Lounge Seating

Total Usable Area:

31,519 SF

Area Per Person (89 People):

354 SF

***Area Per Attorney (72 Attorneys):**

438 SF

*Based on an Approximation of 72 Total Attorneys in
Offices and Workstations



31,519 SF EACH



PRIMARY LEASING CONTACT

Rocco Romeo
212.257.6630
RRomeo@durst.org

ADDITIONAL LEASING CONTACTS

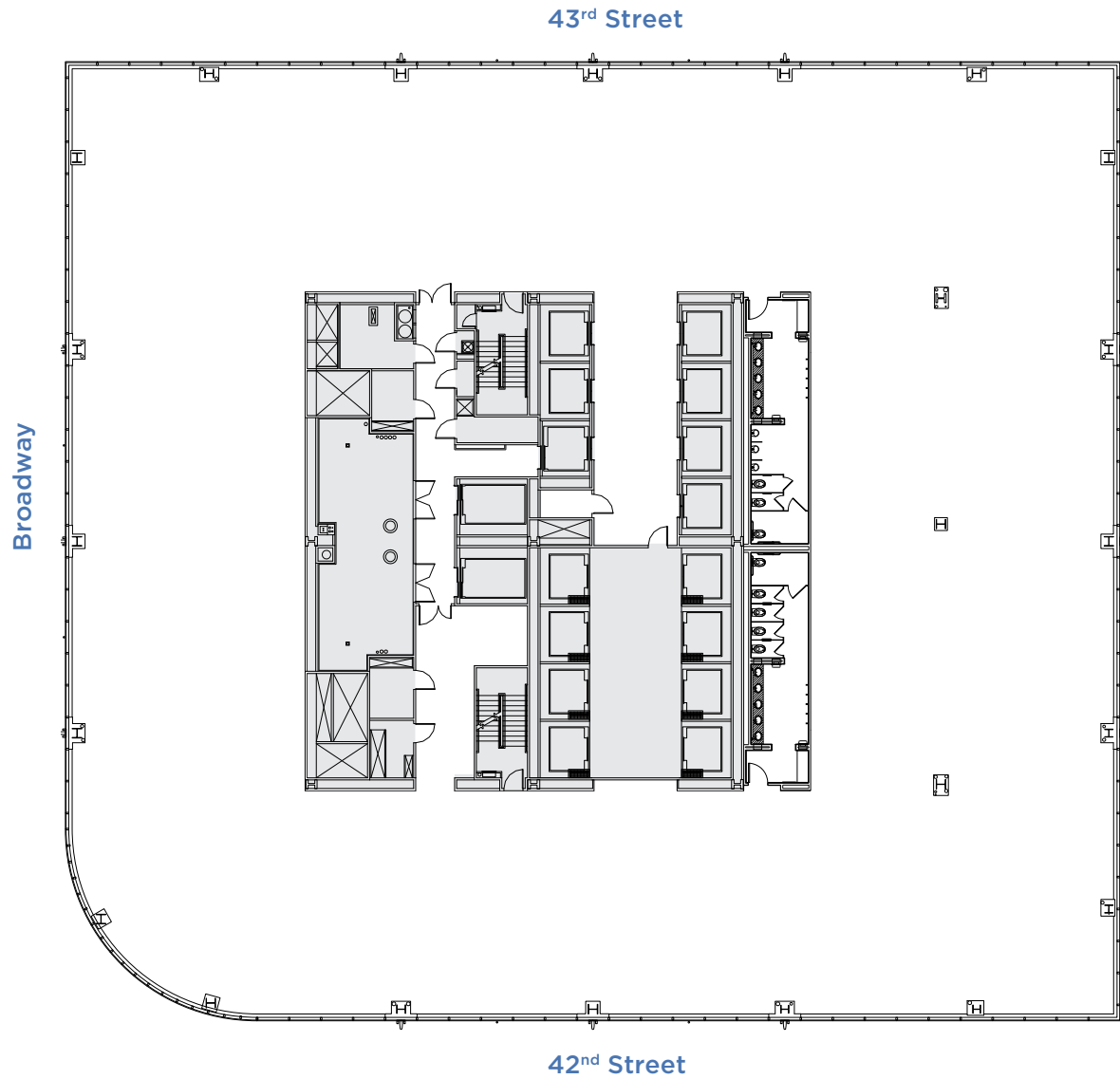
Thomas Bow
212.257.6610
TBow@durst.org

Tanya Grimaldo
212.257.6515
TGrimaldo@durst.org

ONE FIVE ONE

151 WEST 42 ST

CORE & SHELL PLAN ENTIRE FLOOR 40



29,991 SF



PRIMARY LEASING CONTACT

Rocco Romeo
212.257.6630
RRomeo@durst.org

ADDITIONAL LEASING CONTACTS

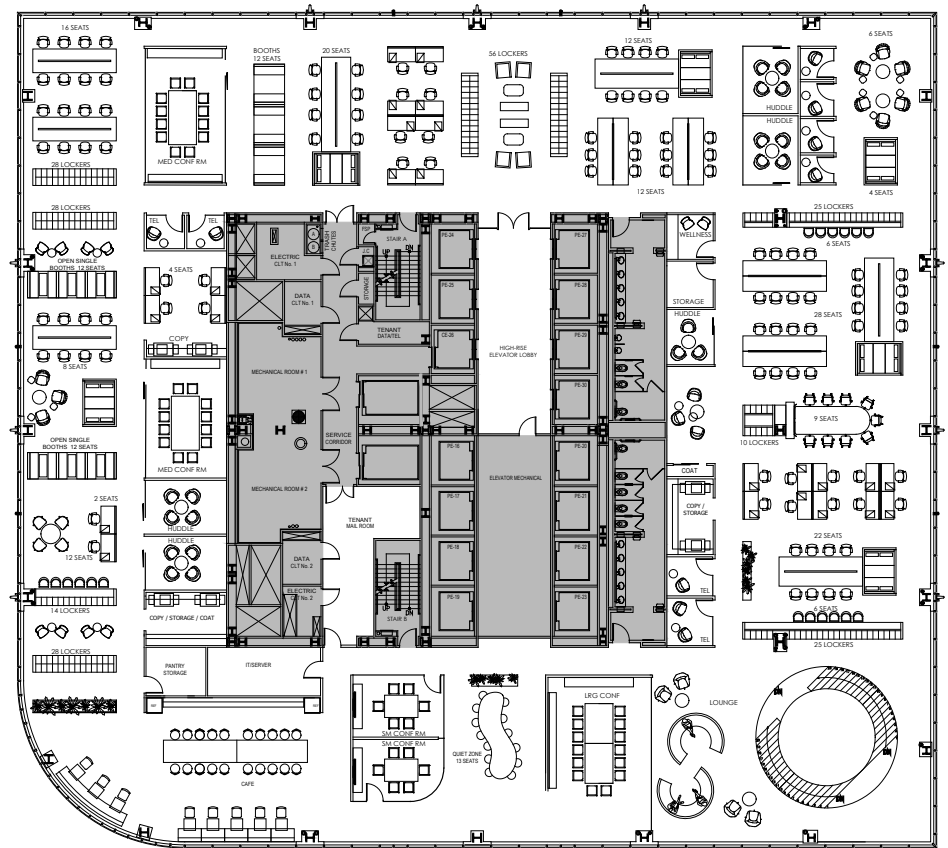
Thomas Bow 212.257.6610 TBow@durst.org	Tanya Grimaldo 212.257.6515 TGrimaldo@durst.org
--	---

ONE FIVE ONE

151 WEST 42 ST

TEST FIT ENTIRE FLOOR 40

PROGRAM	SEATS
Workstations	151
Large Conference Room (14 PPL)	1
Medium Conference Room (12 PPL)	2
Small Conference Room (6 PPL)	2
Open Collaboration	76
Quiet Zone	13
Huddle (2-4 PPL)	5
Wellness Room	1
Phone Room	8
Cafe	36
Lounge	10
Total Seats	151
SUPPORT SPACE	QUANTITY
Lockers	214
Copy Room / Niche	3
Storage Room	4
IDF	1
Coats	2
Stairs	1



29,991 SF



PRIMARY LEASING CONTACT

Rocco Romeo
212.257.6630
RRomeo@durst.org

ADDITIONAL LEASING CONTACTS

Thomas Bow
212.257.6610
TBow@durst.org

Tanya Grimaldo
212.257.6515
TGrimaldo@durst.org