

# ONE WORLD TRADE CENTER

SUITE 48J | 13,286 SF

## PROPERTY IMAGES



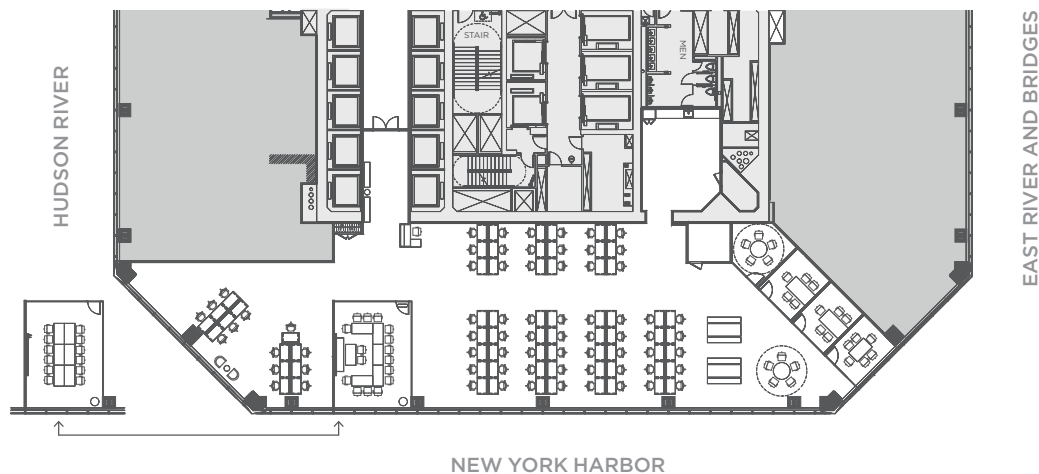
BUILDING EXTERIOR



LOBBY



SAMPLE PREBUILT



## AVAILABILITY

- Available Q1 2020

## FEATURES

- Premium Move-In Ready Office Space
- Elevator Lobby Presence
- Open Plan Layout
- Fully Furnished with Knoll Furniture
- LED Lighting

## PLAN DETAILS

### WORKSPACE

Workstations	71
Reception	1

<b>TOTAL</b>	<b>72</b>
<b>SF</b>	<b>13,286</b>

### COLLABORATION SPACE

Conference Room	1
Team Rooms	4

### PLANNED SUPPORT

IDF Room	1
----------	---



**ERIC ENGELHARDT**  
212.667.8704  
EEngelhardt@durst.org

**TANYA GRIMALDO**  
212.257.6515  
TGrimaldo@durst.org

**DurstReady**