



NYC'S LARGEST
TAMI TENANT COMMUNITY

PARTIAL FLOOR 58

26,292 SF



LOBBY



EXTERIOR



WELL & BY DURST AMENITY SPACE

AVAILABILITY FEATURES

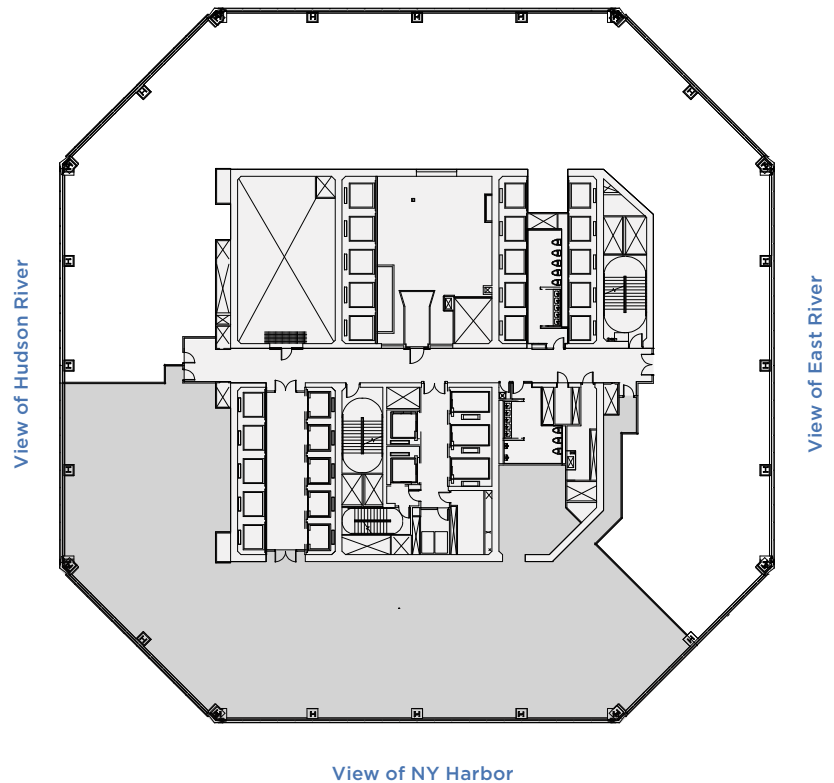
- Column-Free Floor
- Open Ceiling
(13'4" Slab-to-Slab)

PROPERTY FEATURES

- Home to New York City's largest TAMI (technology, advertising, media, information) tenant community, One World Trade Center's state-of-the-art architectural, environmental, and structural design combines with unmatched convenience, ample amenities, and a vibrant neighborhood to inspire innovation, productivity, and success.
- Direct access to 11 subway lines, the PATH, two ferry terminals, numerous bus routes, and five Citi Bike stations.
- Located in the heart of Lower Manhattan's vibrant retail, dining, and cultural hub.

CORE & SHELL PLAN

View of Midtown Manhattan



Eric Engelhardt
212.667.8704
eenglehardt@durst.org

Karen Kuznick
212.667.8705
kkuznick@durst.org



David Falk
212.372.2271
dfalk@ngkf.com

Peter Shimkin
212.372.2150
pshimkin@ngkf.com

Hal Stein
212.233.8185
hstein@ngkf.com

Jason Greenstein
212.372.2349
jgreenstein@ngkf.com

Travis Wilson
212.233.8167
trwilson@ngkf.com