

# ONE FIVE ONE

ENTIRE FLOORS 34-38  
34,154 - 34,185 SF EACH



42<sup>ND</sup> STREET LOBBY



OPEN WORKSPACE - ARTIST RENDERING

## AVAILABILITY

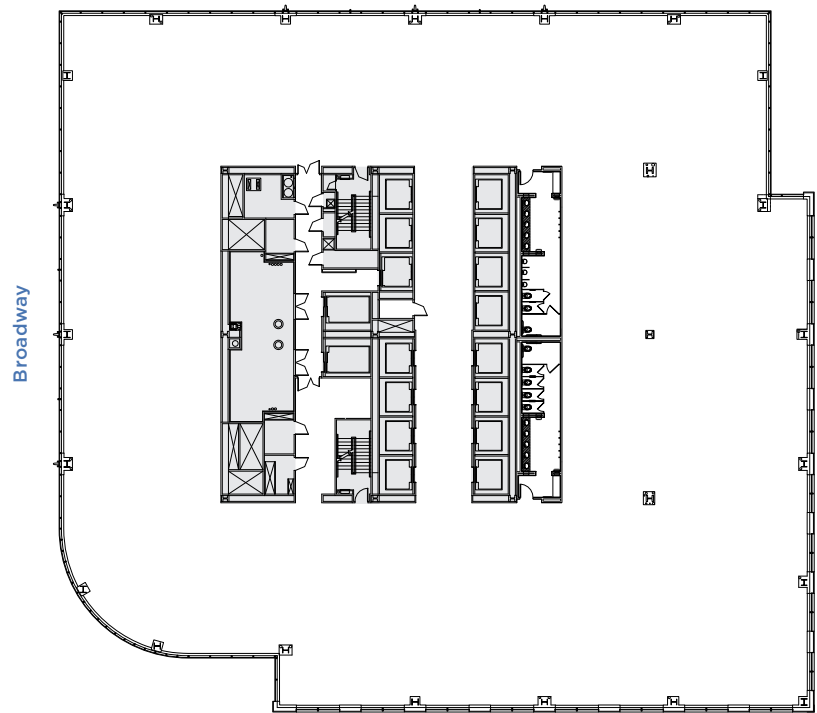
- Contiguous block of up to 326,000 SF on floors 34-43

## PROPERTY FEATURES

- Unrivaled future-focused workspaces boast dramatic views, excellent natural light, inspiring outdoor terraces, generous ceiling heights, and expansive column-friendly floor plates mere steps from Bryant Park.
- Home to the Well& By Durst amenity brand, One Five One's 45,600-SF state-of-the-art tenant amenity floor seamlessly blends an artisanal food hall curated by Master Chef Charlie Palmer, coffee and wine bar, event space, and boutique meeting venues.
- \$150 million capital improvement program introduced a new lobby and entrances, new elevator cabs with destination dispatch controls, state-of-the-art base building upgrades, and energy efficient technological enhancements.
- LEED Gold certification under LEED v4 Existing Buildings: Operations + Maintenance

## CORE & SHELL PLAN

West 43<sup>rd</sup> Street



West 42<sup>nd</sup> Street



### PRIMARY LEASING CONTACT

Rocco Romeo  
212.257.6630  
RRomeo@durst.org

### ADDITIONAL LEASING CONTACTS

Thomas Bow  
212.257.6610  
TBow@durst.org

Tanya Grimaldo  
212.257.6515  
TGrimaldo@durst.org