



NYC'S LARGEST  
TAMI TENANT COMMUNITY

40,763 SF  
ENTIRE FLOOR 70



LOBBY



EXTERIOR



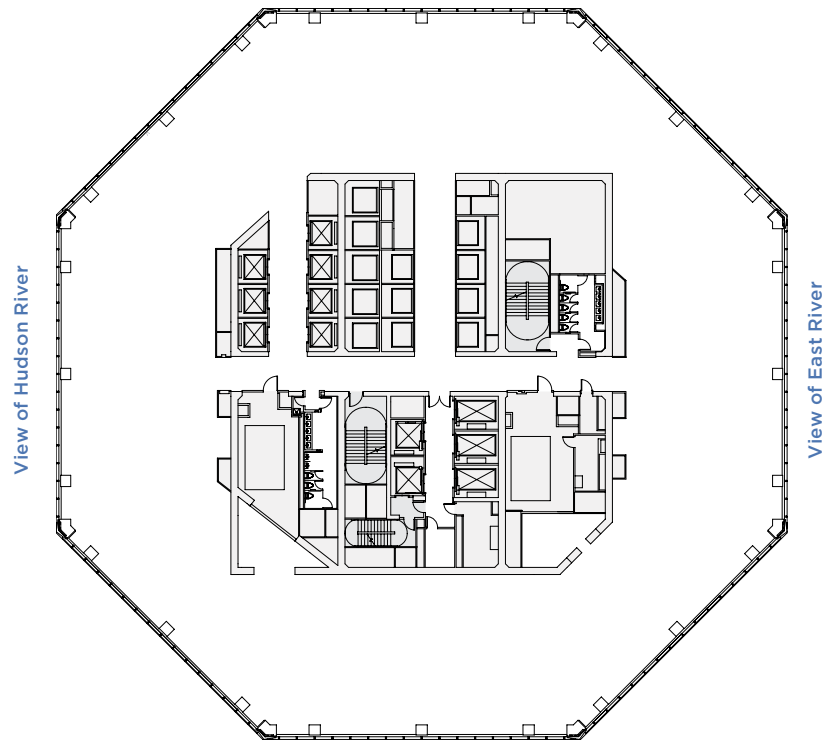
WELL & BY DURST AMENITY SPACE

**PROPERTY FEATURES**

- Home to New York City's largest TAMI (technology, advertising, media, information) tenant community, One World Trade Center's state-of-the-art architectural, environmental, and structural design combines with unmatched convenience, ample amenities, and a vibrant neighborhood to inspire innovation, productivity, and success.
- Direct access to 11 subway lines, the PATH, two ferry terminals, numerous bus routes, and five Citi Bike stations.
- Located in the heart of Lower Manhattan's vibrant retail, dining, and cultural hub.

**CORE & SHELL PLAN**

View of Midtown Manhattan



View of NY Harbor

[▶ CLICK HERE FOR ALL ONE WORLD TRADE CENTER AVAILABILITIES](#)



**Eric Engelhardt**  
212.667.8704  
eengelhardt@durst.org

**Karen Kuznick**  
212.667.8705  
kkuznick@durst.org

**David Falk**  
212.372.2271  
dfalk@ngkf.com

**Peter Shimkin**  
212.372.2150  
pshimkin@ngkf.com

**Hal Stein**  
212.233.8185  
hstein@ngkf.com

**Jason Greenstein**  
212.372.2349  
jgreenstein@ngkf.com

**Travis Wilson**  
212.233.8167  
trwilson@ngkf.com

**NEWMARK**