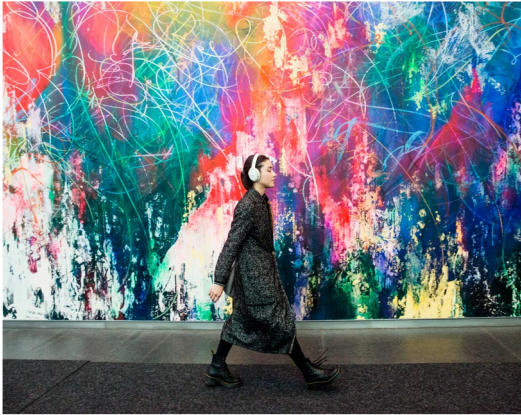




WORLD TRADE CENTER  
 NYC'S LARGEST  
 TAMI TENANT COMMUNITY

# 26,292 SF PARTIAL FLOOR 58



LOBBY



EXTERIOR



WELL & BY DURST AMENITY SPACE

### AVAILABILITY FEATURES

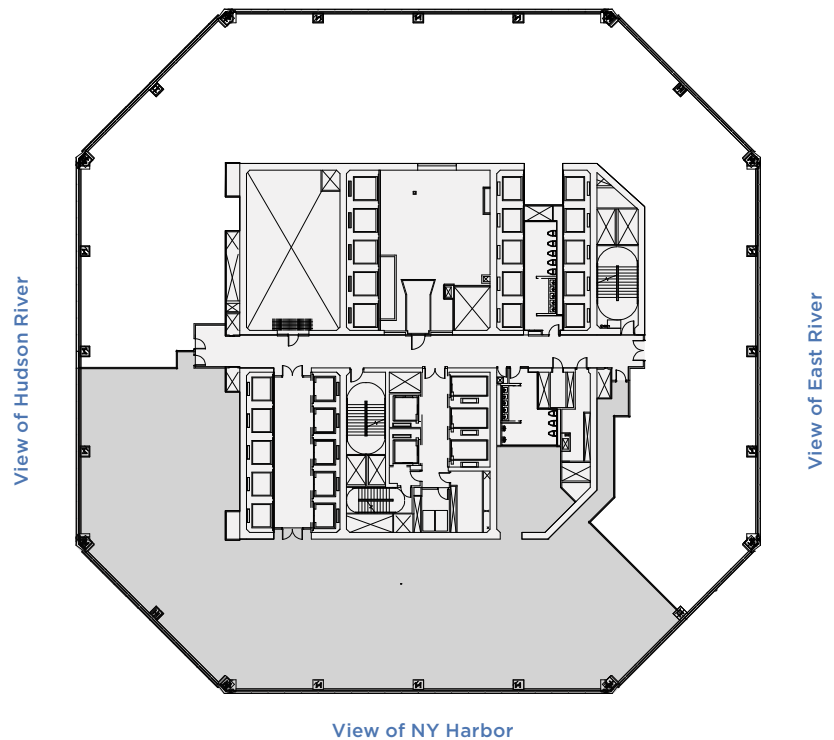
- Column-Free Floor
- Open Ceiling  
 (13'4" Slab-to-Slab)

### PROPERTY FEATURES

- Home to New York City's largest TAMI (technology, advertising, media, information) tenant community, One World Trade Center's state-of-the-art architectural, environmental, and structural design combines with unmatched convenience, ample amenities, and a vibrant neighborhood to inspire innovation, productivity, and success.
- Direct access to 11 subway lines, the PATH, two ferry terminals, numerous bus routes, and five Citi Bike stations.
- Located in the heart of Lower Manhattan's vibrant retail, dining, and cultural hub.

### CORE & SHELL PLAN

View of Midtown Manhattan



[▶ CLICK HERE FOR ALL ONE WORLD TRADE CENTER AVAILABILITIES](#)



**Eric Engelhardt**  
 212.667.8704  
 eengelhardt@durst.org

**Karen Kuznick**  
 212.667.8705  
 kkuznick@durst.org

**David Falk**  
 212.372.2271  
 dfalk@ngkf.com

**Peter Shimkin**  
 212.372.2150  
 pshimkin@ngkf.com

**Hal Stein**  
 212.233.8185  
 hstein@ngkf.com

**Jason Greenstein**  
 212.372.2349  
 jgreenstein@ngkf.com

**Travis Wilson**  
 212.233.8167  
 trwilson@ngkf.com

## NEWMARK