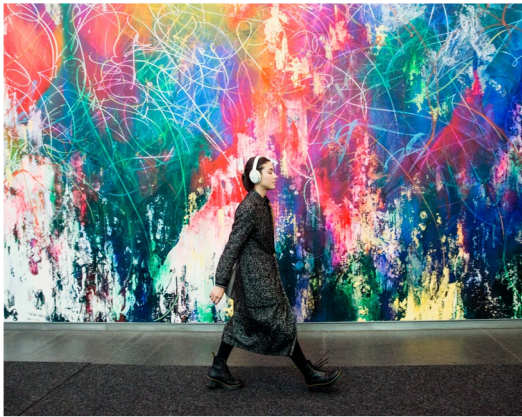




NYC'S LARGEST
TAMI TENANT COMMUNITY

3,510 SF PARTIAL FLOOR 45 - SUITE C



LOBBY



EXTERIOR



WELL & BY DURST AMENITY SPACE

AVAILABILITY FEATURES

- High-End Prebuilt
- Furnished and Wired
- Available Immediately

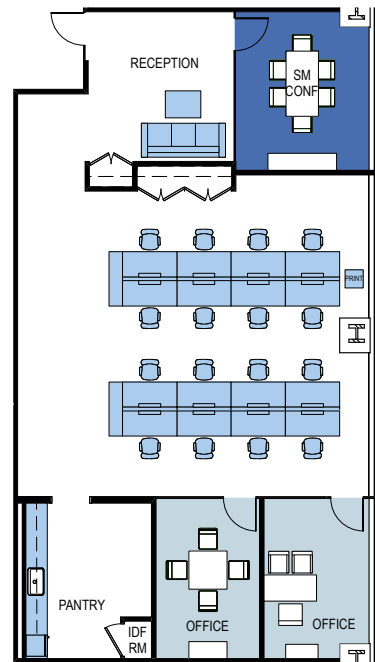
PROPERTY FEATURES

- Home to New York City's largest TAMI (technology, advertising, media, information) tenant community, One World Trade Center's state-of-the-art architectural, environmental, and structural design combines with unmatched convenience, ample amenities, and a vibrant neighborhood to inspire innovation, productivity, and success.

PLAN DETAILS

Workstations	16
Private Offices	2
Conference Room	1
Pantry	1
Reception	1

PREBUILT PLAN



View of East River

[▶ CLICK HERE FOR ALL ONE WORLD TRADE CENTER AVAILABILITIES](#)



NEWMARK

Eric Engelhardt
212.667.8704
eengelhardt@durst.org

Karen Kuznick
212.667.8705
kkuznick@durst.org

David Falk
212.372.2271
dfalk@ngkf.com

Peter Shimkin
212.372.2150
pshimkin@ngkf.com

Hal Stein
212.233.8185
hstein@ngkf.com

Jason Greenstein
212.372.2349
jgreenstein@ngkf.com

Andrew Duffy
212.233.8142
andrew.duffy@ngkf.com